

VersaLex Web GUI

VersaLex Suite

Web-based Operation

The VersaLex Web-based GUI allows companies to configure, monitor, manage and add capabilities to LexiCom or VLTrader remotely, via a standard web browser.

Check the status of file transfers, perform transfers, and access reports, files and logs without needing to go the computer where VLTrader or LexiCom is installed.



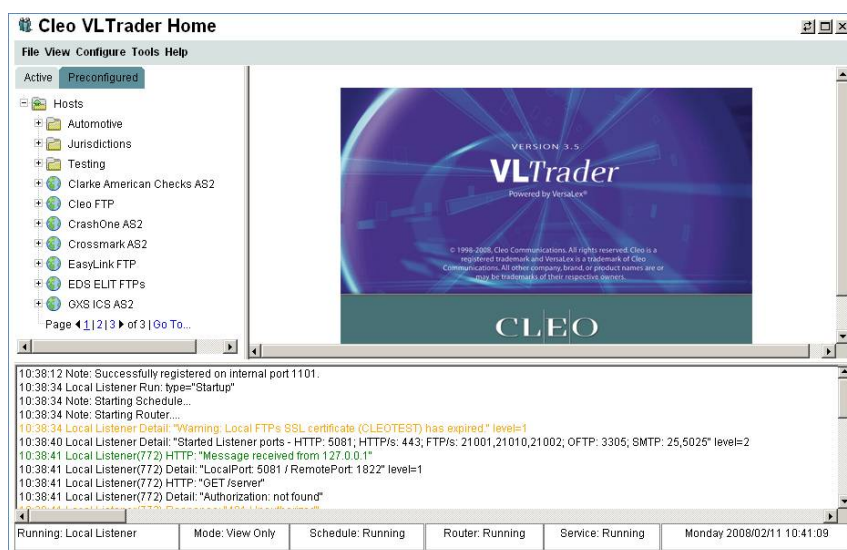
Multi-user web access, available with VLTrader, allows companies to manage communications for multiple applications or purposes. Different users, each with their own unique groups of trading partners, can utilize the web browser interface remotely from each of their offices to manage their own area of responsibility.

The Web GUI also provides support for platforms that do not have a native GUI, such as UNIX systems. This makes the product easier to use, particularly on non-Windows systems.

The Web-based GUI is included with VLTrader; it is an available add-on feature for LexiCom. For more information, or to place an order, contact Cleo Communications' authorized reseller, ECS International.

Technical Details

- Supports two modes - "View-Only" and "Edit", each password protected.
- The native and web browser user interfaces are virtually identical in layout and capability. Internet Explorer version 5 or above and Netscape version 7 or above are supported, although the latest versions are recommended.
- A minimum screen resolution of 1152x864 is highly recommended.



Configure and manage secure communications remotely from anywhere in the world. Web-based Operation allows for multiple users to access the system and manage their distinct areas of responsibility.



ECS INTERNATIONAL
P . O . B O X 2 2
1 6 8 7 Z G W O G N U M
T H E N E T H E R L A N D S
P H O N E . + 3 1 2 2 9 5 7 4 3 3 1
S A L E S @ E C S - E U R O P E . C O M
W W W . E C S - E U R O P E . N L

CLEO COMMUNICATIONS
4203 GALLERIA DRIVE
ROCKFORD, ILLINOIS 61111
UNITED STATES OF AMERICA
W W W . C L E O . C O M

CLEO